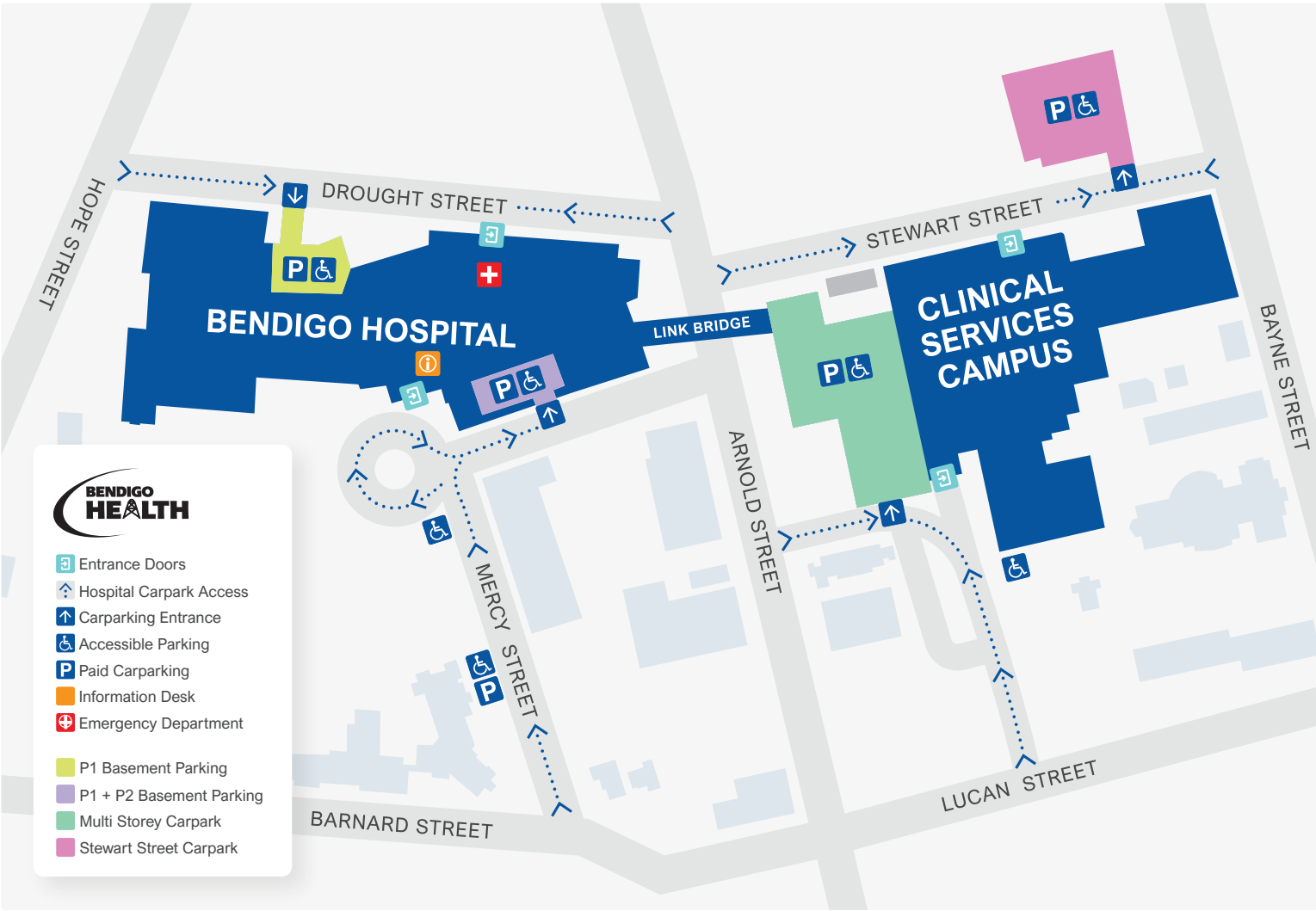


Bendigo Hospital Site Map



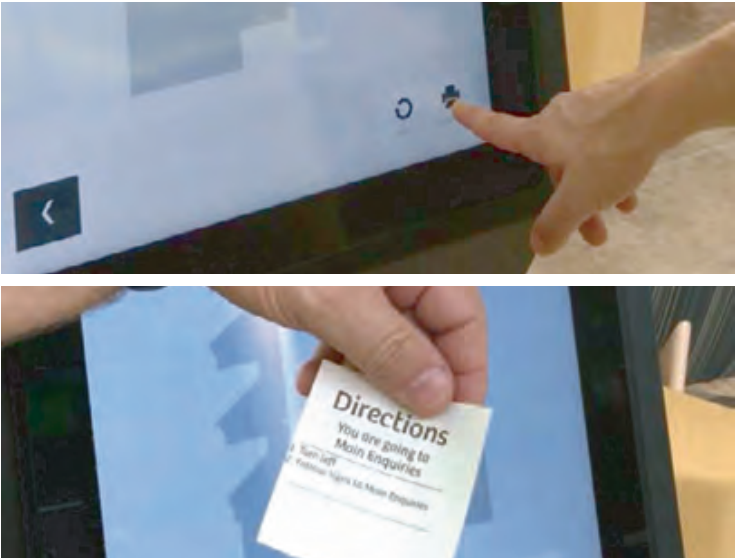
Queuing kiosk information

Bendigo Hospital has automated queuing (self check-in) kiosks for some patients attending appointments. These kiosks are located in several department reception areas, such as Clinics and Medical Imaging.

When you arrive, you can:

- Scan the barcode on your appointment letter, or
- Enter your name on the touchscreen, or
- Swipe your Medicare or DVA card

Your arrival time and status are automatically processed at the kiosk. If any of your appointment information is incorrect, you will be directed to the nearest reception desk for assistance.



Transport and parking

Public Transport

Bendigo Hospital is about a 20-minute walk from the Bendigo Railway Station. Buses run regularly past the hospital, with bus stops located on Barnard Street and Arnold Street. Visit: www.christiansbus.com.au/public-buses/bendigo-bus-timetable/ Phone: 1300 734 441 for individual public transport options.

Taxi Ranks

Taxis can be booked by calling 131 008. Drop-offs are available at the main entrance on Mercy Street or the Emergency Department entrance on Drought Street.

Cyclists

Bike racks are located adjacent to both the Mercy Street main entrance and the Drought Street entrance.

Patient Set-Down and Pick-Up

Designated short-term drop-off and pick-up areas are located at the Mercy Street main entrance and Emergency Department entrance (Drought Street).

Parking

- On-street parking is available around the hospital precinct (some with time limits).
- Disabled parking bays are clearly signed and accessible.
- Additional parking includes:
 - o Basement car park (under the hospital building)
 - o Stewart Street car park
 - o Multi-storey car park (via link bridge)
 - o Small parking fee applies.

Finding your way around the hospital

- For assistance, visit the information desk at the main entrance.
- Volunteers (wearing red shirts) and staff can also assist you.
- The internal street runs south to north on the ground floor. Public services and facilities (cafes, ATMs, reception, lifts) are located off this main concourse.
- Main public lifts are directly behind the Mercy Street reception desk.
- Room numbering: e.g., L2.A.32 = Level 2, Ward A, Room 32.
- Interactive wayfinding kiosks are located at:
 - o Main (front) entrance
 - o Back entrance
 - o Level 2 (multi-storey car park connection)



Bendigo Hospital is a SMOKE FREE site



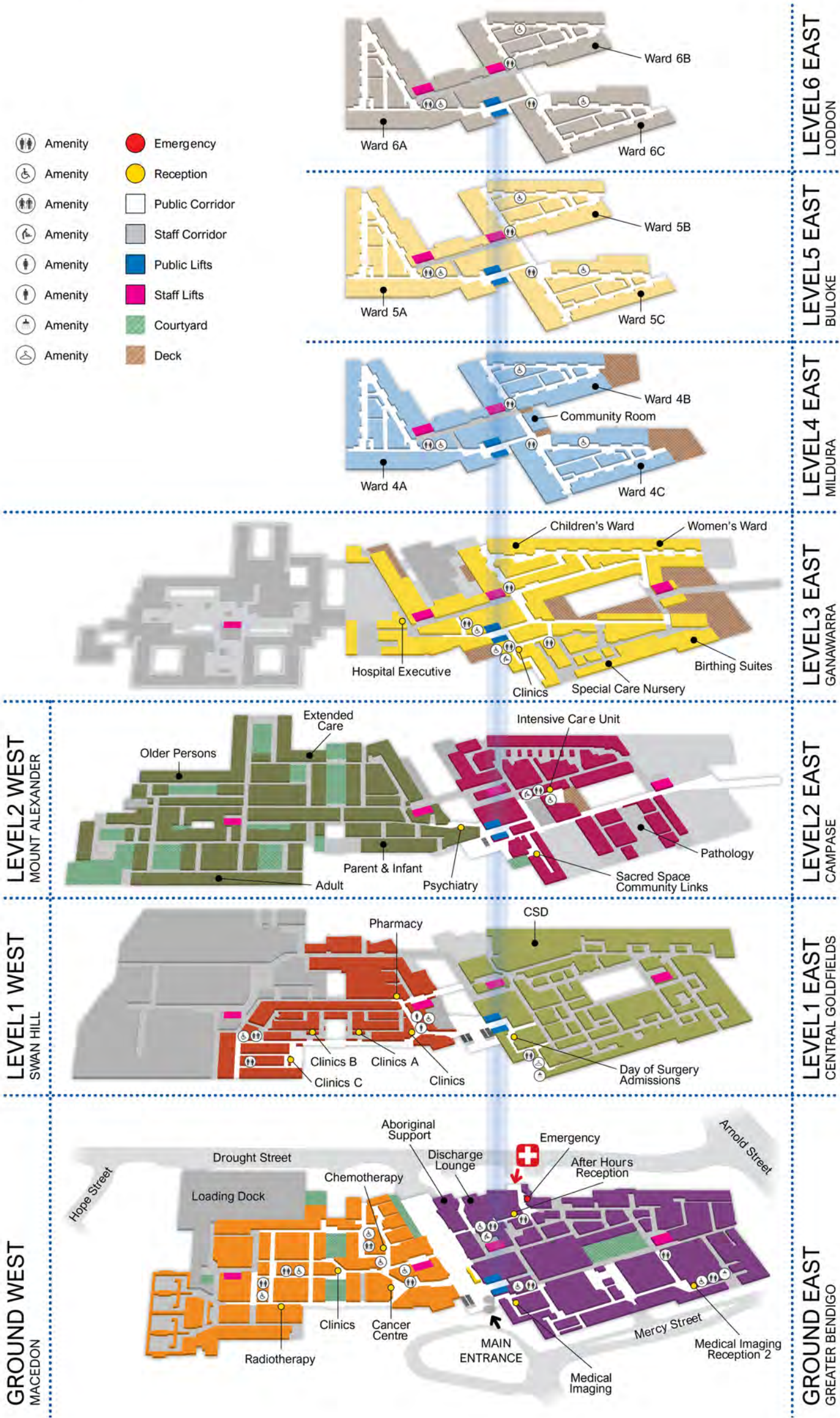
Bendigo Health acknowledges the Traditional Custodians of the land and pay our respects to Elders past, present and emerging.



Bendigo Health is committed to ending family violence.



Bendigo Health is committed to inclusive practice.



Services	Level	Services	Level	Services	Level
Aboriginal Support	G	Day of Surgery Admissions 1		Psychiatry	2
After Hours Reception	G	Discharge Lounge	G	Radiotherapy	G
Birthing Suites	3	Emergency	G	Reception	G
Cafe and Dining	G & 1	Hospital Executive	3	Retail precinct	G
Cancer Centre	G	Inpatient Units	4, 5 & 6	Sacred Space	2
Oncology(Chemotherapy)	G	Intensive Care Unit	2	Special Care Nusery	3
Children's Ward	3	Medical Imaging	G	Women's Health Clinics	3
Clinics	1	Pathology	2	Women's Ward	3
Community Room	4	Pharmacy	1		